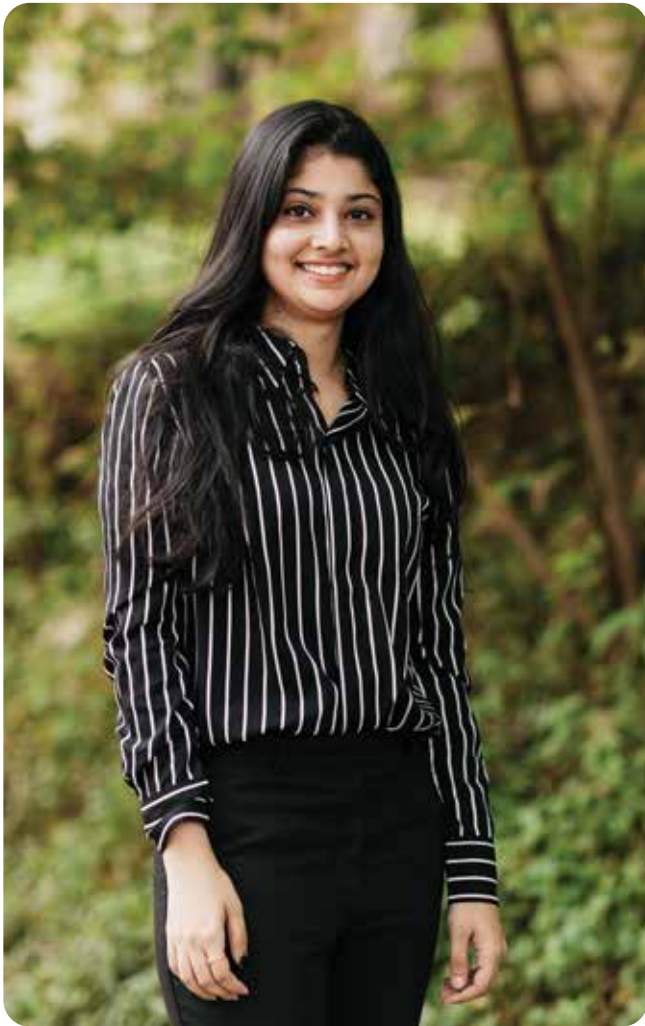


# NMAM INSTITUTE OF TECHNOLOGY

Nitte - 574 110, Karkala Taluk, Karnataka, India

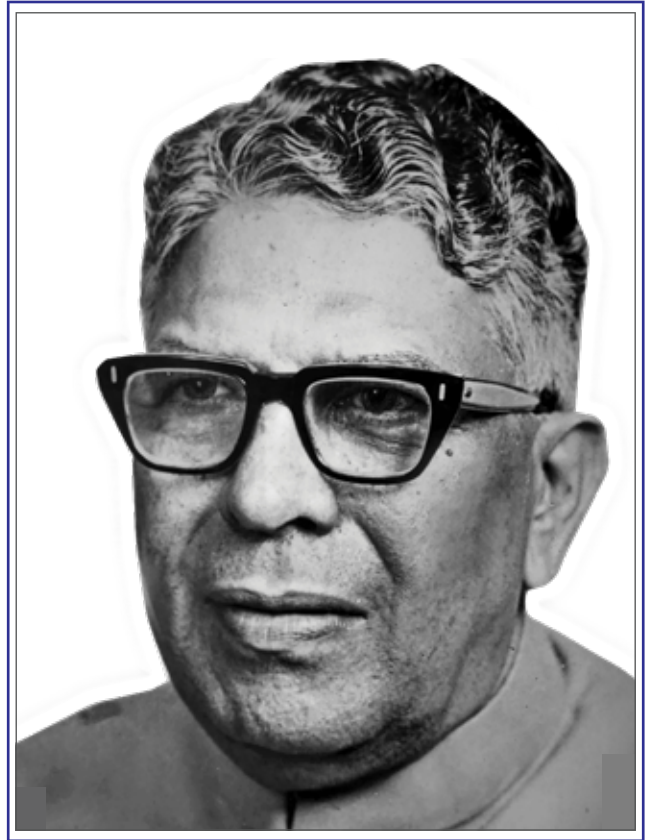


**40+** years  
and growing

# Justice K S Hegde

(1909 - 1990)

Founder



## About the Management

Nitte Education Trust was founded in 1979 by Late Justice K S Hegde, former Judge of the Supreme Court of India and Speaker of the Lok Sabha.

Justice Hegde strongly believed that education was pivotal to the overall progress of a community and this vision led to the birth of Nitte Education Trust.

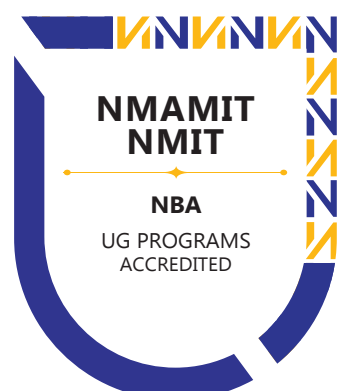
His legacy is being continued by his son, Mr N Vinaya Hegde.

## About Nitte (Deemed to be University)

Nitte University has been ranked among the top 100 Universities in India, consistently for the last four years, in the National Institutional Ranking Framework (NIRF) by the Ministry of HRD, GoI and is accredited with A+ Grade by the National Assessment and Accreditation Council of India (NAAC).

The University offers undergraduate, postgraduate and doctoral programs in a variety of disciplines. International affiliations, encouragement to academic research, a strong emphasis on sustainability, and a healthy student connect are the hallmarks of this growing university.

# HALL OF FAME



# NITTE MAHALINGA ADYANTHAYA MEMORIAL INSTITUTE OF TECHNOLOGY



Established in 1986, approved by AICTE, New Delhi  
Is a constituent college of Nitte (Deemed to be  
University), Mangaluru

Ranked 175<sup>th</sup> in NIRF 2022

UG programs are accredited by the National  
Board of Accreditation (NBA), New Delhi under  
Tier-I category.

Has active collaborations with Penn State  
University; University of Miyazaki;  
Ritsumeikan University, Japan

And has over 5000 students studying in a  
130 acre campus each year.



## FACULTY

### Principal

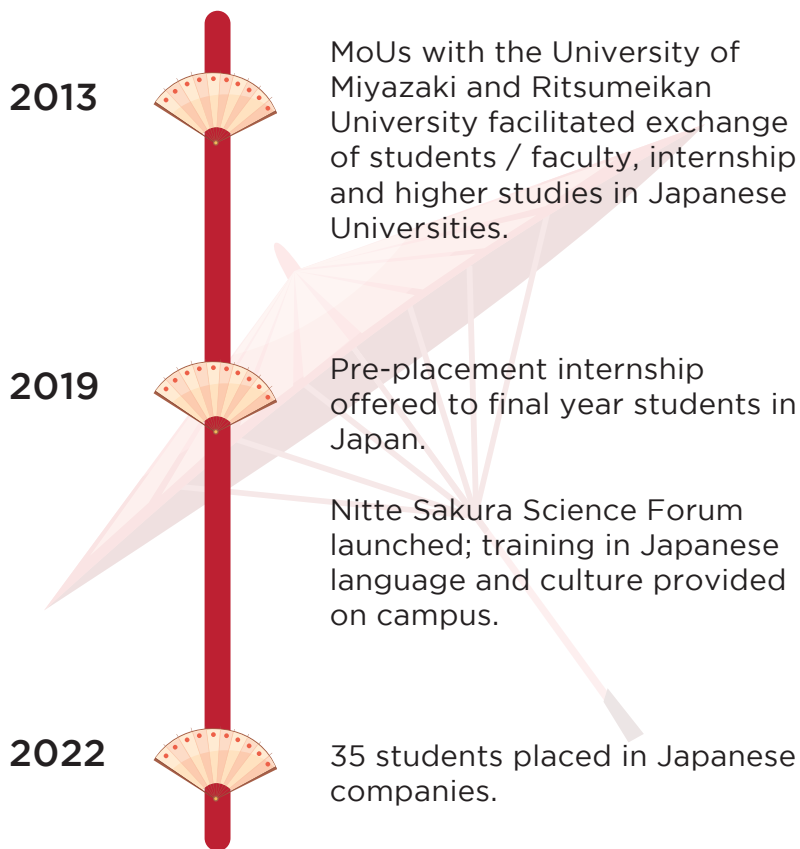
Prof (Dr) Niranjan N Chiplunkar, MTech, PhD, holds a Doctorate in Computer Science & Engineering from the University of Mysore and has 36 years of teaching experience. He was bestowed with the 'Excellent Achievement' award by the Centre for International Cooperation on Computerization (CICC), Govt. of Japan (2002) and Bharatiya Vidya Bhavan's 'Best Engineering College Principal' award by ISTE New Delhi (2014).

The complete list of teaching faculty is available at [www.nmamit.nitte.edu.in](http://www.nmamit.nitte.edu.in)

# 90%

of our students are  
placed this year!

## COLLABORATION WITH JAPANESE ORGANIZATIONS



**R** RITSUMEIKAN  
UNIVERSITY



## ATAL INCUBATION CENTRE NITTE (AIC - Nitte)



- Nitte is among the top 75 institutions in the country selected by NITI Aayog, for setting up the Atal Incubation Centre under Atal Innovation Mission (AIM)
- Supports entrepreneurs by providing mentorship and access to investors
- Supports start-ups in agriculture, health science, information & communication technologies
- Seed funds up to ₹ 200 lakhs have been provided to 15 start-ups
- Also supports existing Micro, Small & Medium Enterprises (MSME) in the region

## ENTREPRENEURSHIP DEVELOPMENT CELL

The Department of Science & Technology (DST), GoI established the Entrepreneurship Development Cell (EDC) at NMAMIT to conduct training programs to promote the development of business ventures, small scale industries, micro enterprises and employment opportunities in the region. EDC also works towards creating an entrepreneurial culture in institutions in and around Nitte.

## NEW AGE INCUBATION NETWORK

NMAMIT was among only 9 engineering colleges selected by GoK for the 'Karnataka New Age Incubation Network'.

NAIN is for students, to work on their projects and bring them to the prototype level.



## DEPARTMENT OF COUNSELLING, WELFARE, TRAINING & PLACEMENT - Abhyuday

Activities include:

- Fresher Orientation Programs (FOP)
- Programs to spot talent, encourage leadership and enhance self-esteem
- Assisting specific needs of students directly or by utilising peers, senior students, alumni, industry mentors, faculty, friends of NMAMIT, social media and library
- Therapeutic help for students
- Remedial programs for non-placed, non-IT students by faculty and placed students
- Employability Readiness Program
- Facilitating industrial training / internship for students
- Pooled campus drives to assist neighbour colleges
- Preparation for higher studies and Armed Forces
- Initiation / support of Student Development Activities & Clubs
- Orientation for students to help them belong, boost morale, seek help and work on deficient areas
- Preparation for placements - Crack the Campus (Aptitude, Technical Round, HR Interview, Group Discussions)
- Address by industry experts and alumni
- Soft Skills training is provided, readying them for the real world

## CENTRES OF R & D

The Institute has various Centres of R & D with state-of-the-art facilities to actively encourage research & development.

### RESEARCH & INNOVATION CENTRE (RIC)

Research, innovation and product development activities are given prime importance at the institute. All postgraduate and undergraduate students are encouraged to participate in activities in the field of research, innovation, product development and publications, under the guidance of faculty mentors. Focused research on developing the next generation of power electronics interfaces for smart grids, power converters for electric vehicles and renewable energy utilization and solid-state transformers is being carried out.

The RIC also houses Centre for Tool based Micromachining Research, Centre for System Design Fabrication and Testing and Centre for design of Active Vibration Isolation System.

Centre for Tool based Micromachining Research has received four best research work awards in the International Machine Tool Exhibition (IMTEX) during 2014-2022. Several research outcomes of these research centre are in the process of being converted into commercial products.





Centres of Excellence are set up under different departments to promote research and innovation.

Following are the Centres active on campus:

Centre for Tool Based Micromachining Research

Centre for Research on Vibration Isolation System

Centre for System Design, Fabrication & Testing

Centre for Design of Power Electronics Systems

Centre for Condition Monitoring Research

Centre for Advanced Machining Research

Centre for IC Engines Research

Centre for Artificial Intelligence (AI)

Centre for Bioenergy Research Information & Demonstration

Centre for Innovation in Biofuel Production

Centre for Welding Technology in Collaboration with Fronius India

Automotive Learning Factory with Technical Handholding by Ashok Leyland

Active Learning Laboratory on Robotics in Collaboration with ABB India

Texas Instruments Centre of Excellence

Centre for AI & ML (Artificial Intelligence & Machine Learning)

Centre for Basic Science Research

## THE RESEARCH & INNOVATION CENTRE

provides internships in the following niche areas

Product life cycle management

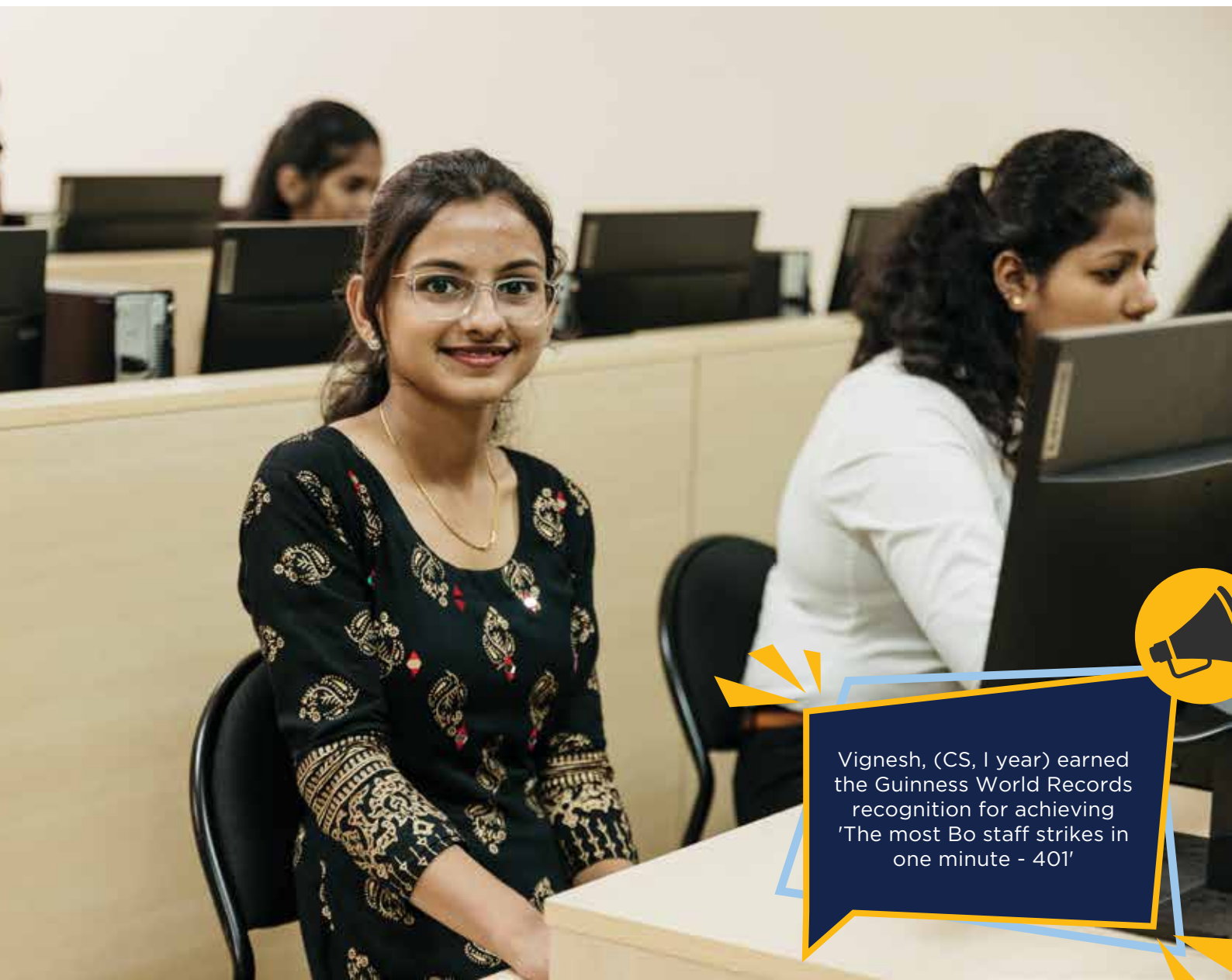
Hardware design and development

PCB design and assembly

Embedded software development  
for power electronic applications

IoT for Power electronic  
applications and automation

Motor drive and control



Vignesh, (CS, 1 year) earned the Guinness World Records recognition for achieving 'The most Bo staff strikes in one minute - 401'



## PROGRAMS

### B.Tech

- Artificial Intelligence & Data Science
- Artificial Intelligence & Machine Learning
- Biotechnology
- Civil
- Computer & Communication
- Computer Science
- Electrical & Electronics
- Electronics & Communication
- Information Science
- Mechanical
- Robotics & Artificial Intelligence
- Information Technology with Full Stack Development specialization (Approval awaited)

## Artificial Intelligence & Data Science

Enables students to acquire technical skills to perform data processing, analysis and visualization for real-time applications.

## Artificial Intelligence & Machine Learning

Enables students to build intelligent solutions or applications with a combination of machine learning, analytics and visualization techniques.

Large industries require the expertise of skilled AI professionals to expand the scope of AI into healthcare, AI-driven medical diagnostics & personal health, transport, security, gaming etc.

## Biotechnology

Biotechnology is an interdisciplinary field of science and engineering that makes use of cells and organisms to integrate biosystems and bioprocesses for the benefit of mankind and the environment.

## Civil

Civil engineering is the oldest and broadest engineering discipline. It is a branch of engineering that deals with the design, construction and maintenance of infrastructure such as roads, bridges, canals, dams, river, shipping lanes, airports, sewage systems, pipelines, buildings, tunnels, power plants etc..

## Computer & Communication

Provides specialization in Data Communication Technologies. Integrates communication techniques, simulation skills and mathematical foundations with hands-on training required to solve real-world problems.

## Computer Science

The problem-solving and programming skills learnt can be applied to areas such as medicine, energy, economic and social issues, among others.

## Electrical & Electronics

Deals with the study, analysis and application of electricity, electronics and electromagnetism. With the emphasis on energy production from renewable resources, power electronics has emerged as a very fertile area for research and development.

## Electronics & Communication

Being the backbone for any consumer application, it finds diverse applications spanning but not limited to Satellite and Mobile Communication, Analog and mixed mode VLSI design, Automaton using scripting, Biomedical instrumentation, Artificial Intelligence and IoT.



## Information Science

An interdisciplinary field primarily focused on collection, storage, retrieval, analysis and management of information, graduates can design and code solutions in domains like finance, banking, insurance, marketing, healthcare, robotics & automation, security etc.

## Mechanical

A branch of engineering that involves design, production and operation of machinery. It applies the principles of engineering, physics and material science for the design analysis, manufacturing and maintenance of mechanical systems.

## Robotics & Artificial Intelligence

Robotics-related courses include the courses related to design and analysis of the robot, sensing, control, programming and applications of robots. Courses related to Artificial Intelligence include courses on the basics of programming, Machine Learning, Image processing and Deep Learning.



## ADMISSION PROCEDURE

### Eligibility

Pass in Class 12 or equivalent examination with not less than 45% marks in aggregate, in the optional subjects of Physics, Mathematics and Chemistry / Biotechnology / Biology / Computer Science / Electronics, with English as one of the languages of study. The candidate should have completed 17 years of age as on 31<sup>st</sup> December of the year of admission.

The University admits candidates under the following categories:

- General category
- NRI category

### ADMISSION UNDER GENERAL CATEGORY

Candidates who are Indian nationals and have studied Class 12 in India, fall under General category. Admission to Engineering program under General Category is based on merit in the All India Entrance Test - NUCAT (Nitte University Common Admission Test).

Aspirants for NUCAT will have to complete and submit the Online NUCAT registration form available at [apply.nitte.edu.in](http://apply.nitte.edu.in)

### Scholarships in NUCAT

20% of the seats in each program / branch is set aside for candidates topping in NUCAT. Admission with a scholarship amounting to 20% - 40% of the prescribed fee will be offered to the toppers in NUCAT.

### ADMISSION UNDER NRI CATEGORY

Candidates mentioned below are eligible for direct admission based on marks secured in the optional subjects in the qualifying examination. Seats will be offered on the basis of inter-se merit.

Candidates who are Foreign Nationals / PIOs / Overseas Citizens of India.

Candidates who have passed Class 12 outside India.

Candidates who have passed Class 12 in India, but sponsored by parents / blood relatives having NRI status.

Candidates seeking admission to the BTech program under NRI category are required to submit the Admission Enquiry form available on [apply.nitte.edu.in](http://apply.nitte.edu.in). On receipt of the same, the Admission Section will guide the students with the process of registration and admission.

## Fee Structure

Fee structure for both General & NRI categories is available on our website [www.nitte.edu.in](http://www.nitte.edu.in) under 'Program Fee'.

## Documents required for admission

Class 10 marks card (Original + 3 attested copies)

Class 12 or equivalent marks card (Original + 3 attested copies)

Transfer Certificate from the institution last attended (Original + 3 attested copies)

Conduct Certificate from the institution last attended

Migration Certificate from the Board of the institution last studied (Original + 3 attested copies)

Eligibility Certificate issued by Nitte University (This will be handled by Nitte)

Physical fitness certificate from a registered medical practitioner

Blood group certificate

Aadhaar card copy of the student


Photographs: Recent colour photo with white background, resolution 300-600 dpi  
Passport size 5 Nos. (35mm x 45mm) & Stamp size 5 Nos. (20mm x 25mm)

## Additional documents for NRI category

- Valid Passport & Visa of parent / sponsor
- Residence Proof of parent / sponsor
- Employment certificate of parent / sponsor
- Sponsorship certificate
- Fee payment shall be in foreign currency / INR from NRE account of sponsor
- Relationship certificate

## Commencement of Classes

The program commences on the date prescribed by the University in July / August.



Team Alligators, the combat team of the Robotics Club secured Second place in Robowars at Engineer 2k22 held at NITK, Surathkal.

# BTech LATERAL ENTRY

## ADMISSION PROCEDURE

### Eligibility

Pass in Diploma in any branch of Engineering & Technology with not less than 45% marks (40% for reserved category candidates)

Admission to BTech Lateral entry program is based on merit in the All India Entrance Test - NUCAT (Nitte University Common Admission Test). Aspirants for NUCAT will have to complete and submit the Online NUCAT registration form available at [apply.nitte.edu.in](http://apply.nitte.edu.in)

### Fee Structure

Fee structure is available on our website [www.nitte.edu.in](http://www.nitte.edu.in) under 'Program Fee'.

### Documents required for admission

Class 10 Marks Card (Original + 3 attested copies)

Diploma Marks Cards of all years (Original + 3 attested copies)

Diploma Certificate (Original + 3 attested copies)

Transfer Certificate from the institution last attended (Original + 3 attested copies)

Conduct Certificate from the institution last attended (Original)

Migration Certificate from the Board of the institution last studied (Original)

Eligibility Certificate issued by Nitte University (This will be handled by Nitte)

Physical fitness certificate from a registered medical practitioner (Original)

Blood group certificate (Original)

Aadhaar card copy of the student

Photographs: Recent colour photo with white background, resolution 300-600 dpi  
Passport size 5 Nos. (35mm x 45mm) & Stamp size 5 Nos. (20mm x 25mm)

### Commencement of Classes

The program commences on the date prescribed by the University in July / August.



# M.Tech

## Specializations

- Computer Science & Engineering
- Construction Technology
- Cyber Security
- Electric Vehicle Technology
- Machine Design
- Structural Engineering
- VLSI Design & Embedded Systems

## Eligibility

Bachelor's degree or equivalent in the relevant field, with minimum of 50% marks (45% in case of candidates belonging to the reserved category) in the qualifying examination. In addition, candidates will have to qualify in the All India Entrance Test - NUCAT (Nitte University Common Admission Test).

Aspirants for the Entrance Test will have to complete and submit the Online NUCAT registration form available at [apply.nitte.edu.in](http://apply.nitte.edu.in)

## Documents required for admission

Class 10 marks card (Original + 3 attested copies)

Degree marks cards of all years (Original + 3 attested copies)

Degree Certificate / Provisional Degree Certificate (Original + 3 attested copies)

Transfer Certificate from the institution last attended (Original + 3 attested copies)

Conduct Certificate from the institution last attended

Migration Certificate from the University of the institution last studied (Original + 3 attested copies)

Eligibility Certificate issued by Nitte University (This will be handled by Nitte)

Physical fitness certificate from a registered medical practitioner

Blood group certificate

Aadhaar card copy of the student

Photographs: Recent colour photo with white background, resolution 300-600 dpi  
Passport size 5 Nos. (35mm x 45mm) & Stamp size 5 Nos. (20mm x 25mm)



## Commencement of Classes

The program commences on the date prescribed by the University in August / September.

## MCA

### Eligibility

Bachelor's degree with Mathematics at 10+2 or Degree level. Candidates should have obtained minimum of 50% marks (45% in case of candidates belonging to reserved category) in the qualifying examination. In addition, candidates will have to qualify in the All India Entrance Test - NUCAT (Nitte University Common Admission Test).

Aspirants for the Entrance Test will have to complete and submit the Online NUCAT registration form available at [apply.nitte.edu.in](https://apply.nitte.edu.in)

## Documents required for admission

Class 10 marks card (Original + 3 attested copies)

Degree marks cards of all years (Original + 3 attested copies)

Degree Certificate / Provisional Degree Certificate (Original + 3 attested copies)

Transfer Certificate from the institution last attended (Original + 3 attested copies)

Conduct Certificate from the institution last attended

Migration Certificate from the University of the institution last studied (Original + 3 attested copies)

Eligibility Certificate issued by Nitte University (This will be handled by Nitte)

Physical fitness certificate from a registered medical practitioner

Blood group certificate

Aadhaar card copy of the student

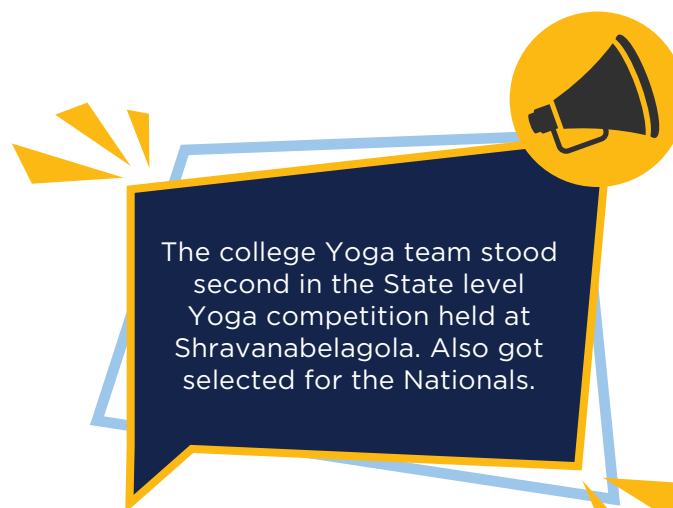
Photographs: Recent colour photo with white background, resolution 300-600 dpi  
Passport size 5 Nos. (35mm x 45mm) & Stamp size 5 Nos. (20mm x 25mm)

## Commencement of Classes

The program commences on the date prescribed by the University in August / September.

### PhD

- Biotechnology
- Civil
- Computer Science
- Mechanical
- Electronics & Communication
- Electrical & Electronics
- Physics
- Chemistry
- Mathematics



## FACILITIES

### Library



84944 volumes. Subscribes to 260 general and technical journals both national and international.

Subscribes to a large number of e journals through INDEST and DELNET

Also offers Online services under VTU Consortium

### Conveyance

A fleet of 33 buses for students and staff from Karkala, Mangaluru, Udupi, Kundapur, Bantwal and Belthangady.



### Cafeteria

Both vegetarian and non-vegetarian food is available on campus.

### Medicare

An ambulance and a full-time doctor are available at the campus clinic.



### Student Clubs

Eleven different clubs cater to topics as diverse as hunger-free India, photography, dance, cinema, music, yoga and communication skills.



### Wi-fi

The campus including hostels are connected through 1 Gbps leased line internet connectivity.

Annadana

Aura

Clicz

Grey Matter

Isiri

Kalanjali

Silver Screen

Stereo

SACA

Taleem

Yuj



## Sports

### The BC Alva Sports Complex includes

- A 14000 sq.ft Indoor Stadium with three badminton courts, one basketball court
- Facilities for table tennis, carrom and chess
- Multi gymnasium, individual exercise stations for weight lifting and power lifting; a separate fitness centre for athletes
- Standard athletic turf track of 400 meters, facility for all kinds of throws and a pavilion with a Fitness Centre
- Football, hockey, cricket grounds; three cement and clay cricket pitches for practicing
- Volleyball, throwball, basketball, handball and netball courts

## Hostel

The college provides well-furnished hostels with vegetarian and non-vegetarian food. A resident warden is available to ensure that students are safe. The hostel has zero tolerance towards ragging, use of tobacco and drug abuse. Security personnel are placed round-the-clock in all the hostels.



## Here's what our students have to say:



**Pratheek Shankar**  
Information Science  
Clover Bay Technologies

I am really fortunate to have been a student of NMAMIT, a place where I have grown. The entire staff work tirelessly to help students define their futures. My four years at NMAMIT was an amazing learning experience.



**Veda Shanubogue**  
Electronics & Communication  
99Games Online Pvt. Ltd


The python classes, CTC, life lessons, corporate lessons etc. provided and arranged by the Placement Department really helped me gain knowledge and helped me broaden my vision. My department, the Department of ECE was also very supportive.

It has been a wonderful experience overall to study, grow and be a part of NMAMIT, Nitte.



**Dhanush Raj**  
Computer Science  
Twilio

College started grooming us for placements by including subjects such as Enhancing Self Competence and Employability Skill Development, conducting mock aptitude and technical tests, training us in public speaking and conducting many insightful sessions throughout the course. Getting placed in Twilio is a big achievement for me, for which I would like to thank the Placement Department and the College.



Students of Aeroclub bagged second place in the National Aeromodelling Competition 2022

**Stefi Castelino**

Civil  
Access Research Labs

The very first company that visited our campus was ACCESS RESEARCH LABS and that was a dream come true for me. Nothing can describe my happiness when I heard my name being called and I got to know that I got selected.

**Shreya**


MCA  
Redbus

Along with placements, NMAMIT also encouraged me in gaining skills that will help me in the corporate world. The placement department has conducted different activities that helped me crack the interview.

**Yashasvini S**

Mechanical  
Mercedes Benz R & D

My placement process had four rounds: an aptitude test, a technical interview, a managerial interview, and an HR interview. There was communication between the company and the institute at every step of this process. I was supported by both teaching staff and the placement department and I'm delighted to begin my professional journey with one of the best automobile companies Mercedes Benz Research & Development India.



NCC Cadets won the Gold Medal in the Ship Modeling Competition at the All India Nau Sainik Camp 2022

# PLACEMENT

**460 RECRUITERS**

HIGHEST CTC - ₹ **53 LPA**

AVERAGE CTC - ₹ **7 LPA**

INTERNATIONAL PLACEMENTS - **35**

NUMBER OF INTERNSHIPS OFFERED IN THE  
LAST ACADEMIC YEAR - **1482**

THE MOOD ON CAMPUS - **JUBILANT!**



# Incridea

INNOVATE.CREATE.IDEATE

*Annual Technocultural Fest*



**4**  
Days



**55**  
Events



**60**  
colleges

**Auto Expo**

**Car n Bike show**

**Pro Nite**

**Footfall 20,000**



# # HappeningatNitte



## COLLEGES

## PROGRAMS OFFERED

### NMAM Institute of Technology (Nitte)

BTech: Artificial intelligence & Data Science |  
Artificial Intelligence & Machine Learning | Biotechnology | Civil |  
Computer & Communication | Computer Science | Electrical & Electronics |  
Electronics & Communication | Information Science | Mechanical |  
Robotics & Artificial Intelligence | Information Technology with Full Stack  
Development specialization (Approval awaited)  
MTech | MCA | MBA | PhD

### Nitte Meenakshi Institute of Technology (Bengaluru)

BE: Artificial Intelligence & Data Science |  
Artificial Intelligence & Machine Learning | Aeronautical | Civil |  
Computer Science | Electrical & Electronics |  
Electronics & Communication | Information Science | Mechanical  
MTech | MCA | MBA | PhD

### K S Hegde Medical Academy (Mangaluru)

MBBS | MD.MS | MCh | PhD | MPH (Public Health) |  
MHA (Hospital Administration)  
Fellowship Program in Interventional Pulmonology  
PG Diploma: Computed Tomography Technology | MRI Technology  
BSc & MSc: Anaesthesia & OT Technology | Medical Imaging Technology |  
Medical Lab Technology | Respiratory Therapy  
BSc: Renal Dialysis Technology | Radiation Therapy Technology

### A B Shetty Memorial Institute of Dental Sciences (Mangaluru)

BDS | MDS | PhD | Fellowship Program in Oral Implantology

### NGSM Institute of Pharmaceutical Sciences (Mangaluru)

DPharm | BPharm | PharmD | PharmD (PB) | MPharm | PhD

### Nitte College of Pharmaceutical Sciences (Bengaluru)

BPharm

### Nitte Usha Institute of Nursing Sciences (Mangaluru)

GNM | PB BSc Nursing | BSc Nursing | MSc Nursing | PhD

### Nitte Institute of Physiotherapy (Mangaluru)

BPT | MPT | PhD

### Nitte Institute of Speech & Hearing (Mangaluru)

B.ASLP (Audiology & Speech Language Pathology)  
MSc: Speech Language Pathology | Audiology

### Nitte University Centre for Science Education & Research (Mangaluru)

BSc (Honors) Biomedical Science  
MSc: Biomedical Science | Food Safety & Biotechnology | Microbiology |  
Biotechnology | Marine Biotechnology (DBT sponsored) | PhD

## COLLEGES

## PROGRAMS OFFERED

**Nitte Institute of Architecture**  
(Mangaluru)

BArch

**Nitte School of Architecture,  
Planning & Design** (Bengaluru)

BArch | BPlanning

**Nitte Institute of Communication**  
(Mangaluru)

BA (Honors) Media & Communication | MA Media & Communication  
PG Diploma: Photography & Filmmaking | Advertising & PR

**Nitte Institute of Hospitality Services**  
(Mangaluru)

BSc (Honors) Hospitality Management | Culinary Arts & Management

**Justice K S Hegde Institute of  
Management** (Nitte)

MBA | PhD

**Nitte School of Management**  
(Bengaluru)

PG Diploma in Management

**Nitte School of Fashion Technology  
& Interior Design** (Bengaluru)

BSc & MSc: Fashion & Apparel Design | Interior Design & Decoration  
Diploma: Fashion Design | Interior Design  
PG Diploma: Home Interiors | Fashion Styling & Image Management

**Dr NSAM First Grade College**  
(Nitte)

BCA | BSc (Data Analytics) | BCom (General | Professional)  
BBA (General | Logistics & Supply Chain Management |  
Business Analytics)

**Nitte Institute of Professional  
Education** (Mangaluru)

BCA (Artificial Intelligence | Cyber Security | Cloud Technology)  
BBA (Business Analytics | International Business |  
Banking & Financial Services)

**Dr NSAM First Grade College**  
(Bengaluru)

BCom | BBA | BA | BCA

**Nitte Rukmini Adyanthaya Memorial  
Polytechnic** (Nitte)

Diploma in Engineering: Civil | Computer Science |  
Electrical & Electronics | Electronics & Communication | Mechanical |  
Apparel Design & Fabrication Technology

## For further details, contact

---

The Director (Administration),  
Nitte Deemed to be University,  
Medical Sciences Complex, Deralakatte,  
Mangaluru - 575 018, Karnataka, India

0824 2204 310  
+91 95131 88844  
+91 94808 12310  
+91 94808 12312

[info@nitte.edu.in](mailto:info@nitte.edu.in)  
[www.nitte.edu.in](http://www.nitte.edu.in)

